



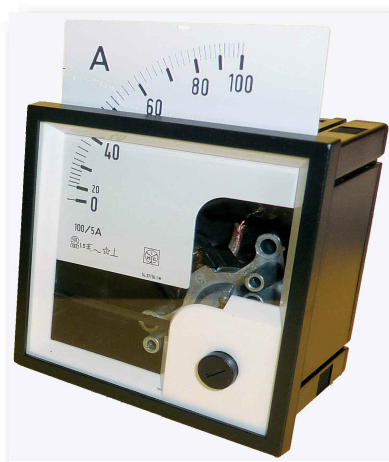
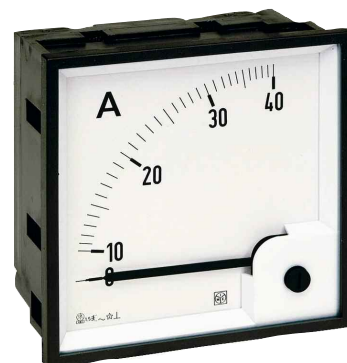
**Indicatori Analogici - RQE
per corrente alternata**
48x48mm
72x72mm
96x96mm

**RQE - Analog Meters
for alternating current**
48x48mm
72x72mm
96x96mm

AN

Indicazione diretta della corrente di ingresso o della corrente primaria del TA esterno
Equipaggio elettromagnetico
Ingresso diretto da 1 a 100A (60A per RQ48E)
Ingresso da TA esterno /5A oppure /1A
Versione per avviamento motore 2In opp. 5In
Ampiezza scala 90°
Precisione cl.1,5

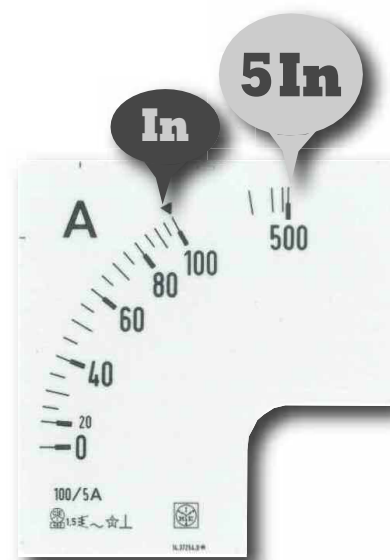
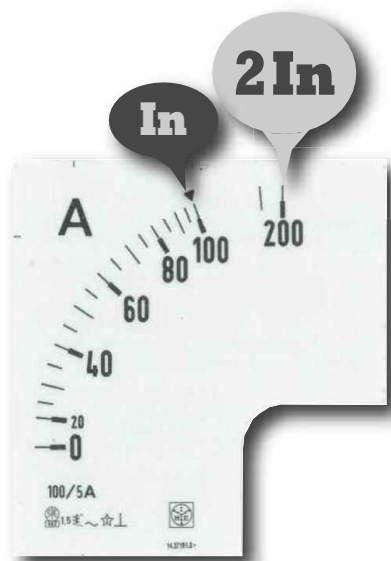
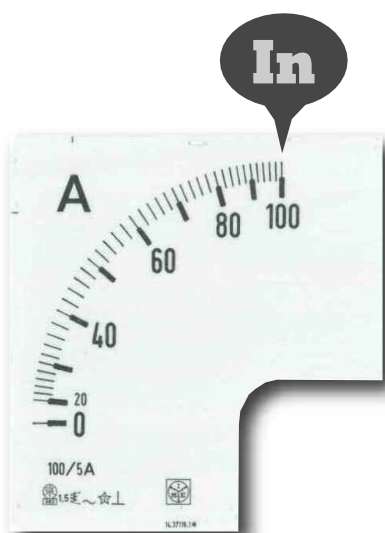
Direct indication of input current or primary current of external CT
Moving iron equipment
Direct connection 1...100A (60A for RQ48E)
Input by external CT /5A or /1A
Version for starting motor 2In or 5In
Scale length 90°
Accuracy class 1,5



Scala intercambiabile
Interchange scales



RQ72E - RQ96
Coprimerosetto di serie
Standard terminal cover



Inserzione Connection	da TA/5A on CT/5A			da TA/1A on CT/1A		
	0...In			0...In		
Scala / Scale	0...In			0...In		
Modello / Model	RQ48E	RQ72E	RQ96E	RQ48E	RQ72E	RQ96E
Dimensioni Dimensions	48 x 48	72 x 72	96 x 96	48 x 48	72 x 72	96 x 96
Portata / Range	CODICE DI ORDINAZIONE / ORDERING CODE					
Senza scala Without scale	AN12510000	AN22510000	AN32510000	AN12110000	AN22110000	AN32110000
5A	AN12D1A500	AN22D1A500	AN32D1A500	AN1211A500	AN2211A500	AN3211A500
10A	AN1251B100	AN2251B100	AN3251B100	AN1211B100	AN2211B100	AN3211B100
15A	AN1251B150	AN2251B150	AN3251B150	AN1211B150	AN2211B150	AN3211B150
20A	AN1251B200	AN2251B200	AN3251B200	AN1211B200	AN2211B200	AN3211B200
25A	AN1251B250	AN2251B250	AN3251B250	AN1211B250	AN2211B250	AN3211B250
30A	AN1251B300	AN2251B300	AN3251B300	AN1211B300	AN2211B300	AN3211B300
40A	AN1251B400	AN2251B400	AN3251B400	AN1211B400	AN2211B400	AN3211B400
50A	AN1251B500	AN2251B500	AN3251B500	AN1211B500	AN2211B500	AN3211B500
60A	AN1251B600	AN2251B600	AN3251B600	AN1211B600	AN2211B600	AN3211B600
70A	AN1251B700	AN2251B700	AN3251B700	AN1211B700	AN2211B700	AN3211B700
75A	AN1251B750	AN2251B750	AN3251B750	AN1211B750	AN2211B750	AN3211B750
80A	AN1251B800	AN2251B800	AN3251B800	AN1211B800	AN2211B800	AN3211B800
100A	AN1251C100	AN2251C100	AN3251C100	AN1211C100	AN2211C100	AN3211C100
120A	AN1251C120	AN2251C120	AN3251C120	AN1211C120	AN2211C120	AN3211C120
125A	AN1251C125	AN2251C125	AN3251C125	AN1211C125	AN2211C125	AN3211C125
150A	AN1251C150	AN2251C150	AN3251C150	AN1211C150	AN2211C150	AN3211C150
160A	AN1251C160	AN2251C160	AN3251C160	AN1211C160	AN2211C160	AN3211C160
200A	AN1251C200	AN2251C200	AN3251C200	AN1211C200	AN2211C200	AN3211C200
250A	AN1251C250	AN2251C250	AN3251C250	AN1211C250	AN2211C250	AN3211C250
300A	AN1251C300	AN2251C300	AN3251C300	AN1211C300	AN2211C300	AN3211C300
400A	AN1251C400	AN2251C400	AN3251C400	AN1211C400	AN2211C400	AN3211C400
500A	AN1251C500	AN2251C500	AN3251C500	AN1211C500	AN2211C500	AN3211C500
600A	AN1251C600	AN2251C600	AN3251C600	AN1211C600	AN2211C600	AN3211C600
700A	AN1251C700	AN2251C700	AN3251C700	AN1211C700	AN2211C700	AN3211C700
750A	AN1251C750	AN2251C750	AN3251C750	AN1211C750	AN2211C750	AN3211C750
800A	AN1251C800	AN2251C800	AN3251C800	AN1211C800	AN2211C800	AN3211C800
1.000A	AN1251D100	AN2251D100	AN3251D100	AN1211D100	AN2211D100	AN3211D100
1.200A	AN1251D120	AN2251D120	AN3251D120	AN1211D120	AN2211D120	AN3211D120
1.250A	AN1251D125	AN2251D125	AN3251D125	AN1211D125	AN2211D125	AN3211D125
1.500A	AN1251D150	AN2251D150	AN3251D150	AN1211D150	AN2211D150	AN3211D150
1.600A	AN1251D160	AN2251D160	AN3251D160	AN1211D160	AN2211D160	AN3211D160
2.000A	AN1251D200	AN2251D200	AN3251D200	AN1211D200	AN2211D200	AN3211D200
2.500A	AN1251D250	AN2251D250	AN3251D250	AN1211D250	AN2211D250	AN3211D250
3.000A	AN1251D300	AN2251D300	AN3251D300	AN1211D300	AN2211D300	AN3211D300
4.000A	AN1251D400	AN2251D400	AN3251D400	AN1211D400	AN2211D400	AN3211D400
5.000A	AN1251D500	AN2251D500	AN3251D500	AN1211D500	AN2211D500	AN3211D500
6.000A	AN1251D600	AN2251D600	AN3251D600	AN1211D600	AN2211D600	AN3211D600
8.000A	AN1251D800	AN2251D800	AN3251D800	AN1211D800	AN2211D800	AN3211D800
10.000A	AN1251E100	AN2251E100	AN3251E100	AN1211E100	AN2211E100	AN3211E100

Versione / Version	Suffisso / Suffix	Esempio / Example
Avviamento motore 2In Motor startup 2In	Sostituire la 6 ^a cifra del codice (1) con 2 Replace the 6 th digit of the code (1) with 2	AN225 1 C500 = AN225 2 B500
Avviamento motore 5In Motor startup 5In	Sostituire la 6 ^a cifra del codice (1) con 5 Replace the 6 th digit of the code (1) with 5	AN225 1 C500 ⇒ AN225 5 C500

Inserzione Connection	DIRETTA / DIRECT		
Scala / Scale	0...In		
Modello / Model	RQ48E	RQ72E	RQ96E
Dimensioni Dimensions	48 x 48	72 x 72	96 x 96
Portata / Range	CODICE DI ORDINAZIONE / ORDERING CODE		
1A	AN12D1A100	AN22D1A100	AN32D1A100
1,5A	AN12D1A150	AN22D1A150	AN32D1A150
2A	AN12D1A200	AN22D1A200	AN32D1A200
2,5A	AN12D1A250	AN22D1A250	AN32D1A250
3A	AN12D1A300	AN22D1A300	AN32D1A300
4A	AN12D1A400	AN22D1A400	AN32D1A400
5A	AN12D1A500	AN22D1A500	AN32D1A500
6A	AN12D1A600	AN22D1A600	AN32D1A600
10A	AN12D1B100	AN22D1B100	AN32D1B100
15A	AN12D1B150	AN22D1B150	AN32D1B150
20A	AN12D1B200	AN22D1B200	AN32D1B200
25A	AN12D1B250	AN22D1B250	AN32D1B250
30A	AN12D1B300	AN22D1B300	AN32D1B300
40A	AN12D1B400	AN22D1B400	AN32D1B400
50A	AN12D1B500	AN22D1B500	AN32D1B500
60A	AN12D1B600	AN22D1B600	AN32D1B600
80A	-	AN22D1B800	AN32D1B800
100A	-	AN22D1C100	AN32D1C100

Versione / Version	Suffisso / Suffix	Esempio / Example
Avviamento motore 2In Motor startup 2In	Sostituire la 6ª cifra del codice (1) con 2 Replace the 6ª digit of the code (1) with 2	AN225 1 C500 ⇒ AN225 2 B500
Avviamento motore 5In Motor startup 5In	Sostituire la 6ª cifra del codice (1) con 5 Replace the 6ª digit of the code (1) with 5	AN225 1 C500 ⇒ AN225 5 C500

Altre esecuzioni disponibili su tutti i modelli:

Other executions available on all models:

Opzione / Option	Suffisso / Suffix	Esempio / Example
Tropicalizzato Tropicalized	Aggiungere " 1 " al codice standard Add " 1 " at the end of standard code	AN2251C500 ⇒ AN2251C500 1
Tropicalizzato + Antivibrante Vibrationproof + Tropicalized	Aggiungere " 2 " al codice standard Add " 2 " at the end of standard code	AN2251C500 ⇒ AN2251C500 2
Protezione frontale IP54 IP54 Front protection	Aggiungere " 3 " al codice standard Add " 3 " at the end of standard code	AN2251C500 ⇒ AN2251C500 3
Protezione frontale IP54 + antivibrante IP54 Front protection + Vibrationproof	Aggiungere " 4 " al codice standard Add " 4 " at the end of standard code	AN2251C500 ⇒ AN2251C500 4
Frequenza nominale fn 400Hz Frequency rating fn 400Hz	Aggiungere " 7 " al codice standard Add " 7 " at the end of standard code	AN2251C500 ⇒ AN2251C500 7

VISUALIZZAZIONE

Scala: intercambiabile, con inserimento guidato a protezione dell'indice e cassetto di chiusura

Colore scala: fondo bianco, divisioni e numerazione nere

A richiesta scale personalizzate

Opzioni: segno rosso di riferimento

Ampiezza scala: 90°

Tracciatura standard: 0...In

Tracciatura avviamento motore: 0...In...2In opp. 0...In...5In

Colore indice: nero

Opzione: indice rosso di riferimento (regolabile) per la memorizzazione del valore massimo misurato

DISPLAY

Scale: interchangeable, easy-insertion to protect the pointer as well as relevant closing slip

Scale colour: white background, black divisions and numbering

Customized scales upon request

Option: reference red mark

Scale length: 90°

Standard scale marking: 0...In

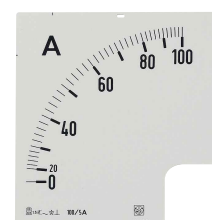
Motor startup marking scale: 0...In...2In or 0...In...5In

Pointer colour: black

Option: (adjustable) reference red pointer to store the highest measured value

Modello Model	Scala per / Scale for RQ48E	Scala per / Scale for RQ72E	Scala per / Scale for RQ96E
------------------	--------------------------------	--------------------------------	--------------------------------

Scala
Scale



0...In per amperometri su TA/5A / for CT/5A ammeters

Portata / Range **CODICE DI ORDINAZIONE / ORDERING CODE**

5/5A	SC12D1A500	SC22D1A500	SC32D1A500
10/5A	SC1251B100	SC2251B100	SC3251B100
15/5A	SC1251B150	SC2251B150	SC3251B150
20/5A	SC1251B200	SC2251B200	SC3251B200
25/5A	SC1251B250	SC2251B250	SC3251B120
30/5A	SC1251B300	CS2251B300	SC3251B300
40/5A	SC1251B400	SC2251B400	SC3251B400
50/5A	SC1251B500	SC2251B500	SC3251B500
60/5A	SC1251B600	SC2251B600	SC3251B600
70/5A	SC1251B700	SC2251B700	SC3251B700
75/5A	SC1251B750	SC2251B750	SC3251B750
80/5A	SC1251B800	SC2251B800	SC3251B800
100/5A	SC1251C100	SC2251C100	SC3251C100
120/5A	SC1251C120	SC2251C120	SC3251C120
125/5A	SC1251C125	SC2251C125	SC3251C125
150/5A	SC1251C150	SC2251C150	SC3251C150
160/5A	SC1251C160	SC2251C160	SC3251C160
200/5A	SC1251C200	SC2251C200	SC3251C200
250/5A	SC1251C250	SC2251C250	SC3251C250
300/5A	SC1251C300	SC2251C300	SC3251C300
400/5A	SC1251C400	SC2251C400	SC3251C400
500/5A	SC1251C500	SC2251C500	SC3251C500
600/5A	SC1251C600	SC2251C600	SC3251C600
700/5A	SC1251C700	SC2251C700	SC3251C700
750/5A	SC1251C750	SC2251C750	SC3251C750
800/5A	SC1251C800	SC2251C800	SC3251C800
1000/5A	SC1251D100	SC2251D100	SC3251D100
1200/5A	SC1251D120	SC2251D120	SC3251D120
1250/5A	SC1251D125	SC2251D125	SC3251D125
1500/5A	SC1251D150	SC2251D150	SC3251D150
1600/5A	SC1251D160	SC2251D160	SC3251D160
2000/5A	SC1251D200	SC2251D200	SC3251D200
2500/5A	SC1251D250	SC2251D250	SC3251D250
3000/5A	SC1251D300	SC2251D300	SC3251D300
4000/5A	SC1251D400	SC2251D400	SC3251D400
5000/5A	SC1251D500	SC2251D500	SC3251D500
6000/5A	SC1251D600	SC2251D600	SC3251D600
8000/5A	SC1251D800	SC2251D800	SC3251D800
10000/5A	SC1251E100	SC2251E100	SC3251E100

Versione / Version	Suffisso / Suffix	Esempio / Example
Scala ristretta al fondo 2In 2In overscale	Sostituire la 6ª cifra del codice (1) con 2 Replace the 6ª digit of the code (1) with 2	SC2251C500 ⇒ SC225 2 B500
Scala ristretta al fondo 5In 5In overscale	Sostituire la 6ª cifra del codice (1) con 5 Replace the 6ª digit of the code (1) with 5	SC2251C500 ⇒ SC225 5 B500
Inserzione su TA/1A CT/1A connection	Sostituire la 5ª cifra del codice (5) con 1 Replace the 5ª digit of the code (5) with 1	SC22 5 1C500 ⇒ SC22 1 1C500

INGRESSO

Grandezza: corrente alternata monofase

Inserzione: diretta (S 250/105) o da TA esterno /5A opp. /1A (S 250/106)

Misura: vero valore efficace

Corrente nominale In

Inserzione diretta: 1...100A (vedi tabella)

Inserzione da TA esterno: 5A oppure 1A

Sovraccarico permanente: 1,2In

Sovraccarico istantaneo: 10In/5s

Frequenza nominale fn: 50Hz

Frequenza di funzionamento: 45...65Hz

Opzione: frequenza nominale fn 400Hz

Precisione (EN/IEC 60051): cl.1,5

Opzione: precisione cl.1

Autoconsumo: ≤ 1,1VA

ISOLAMENTO

(EN/IEC 61010-1)

Categoria di installazione: III

Grado di inquinamento: 2

Tensione di riferimento per l'isolamento: 600V (Fase - Neutro)

Prova a tensione alternata 4kV valore efficace 50Hz/5s

Circuiti considerati: tutti i circuiti verso terra

CONDIZIONI AMBIENTALI

Temperatura di riferimento: 23°C

Campo nominale di utilizzo: 5...45°C

Campo limite di funzionamento: -25...60°C

Umidità relativa: < 75% (@ 23°C) valore medio annuo,
< 95% (@ 23°C) valore massimo per 30 giorni all'anno, nessuna condensazione

Campo limite per l'immagazzinamento e trasporto: -40...80°C

Prova di vibrazioni: in accordo con EN/IEC 60051-1 paragrafo 7.6

Prova d'urto: in accordo con EN/IEC 60051-1 paragrafo 7.6

CUSTODIA

Fissaggio: incasso

INPUT

Quantity: single-phase, alternating current

Connection: direct (S 250/105) or by external CT /5A or /1A (S 250/106)

Measure: true RMS value

Rating current In

Direct connection: 1...100A (see table)

Connection by CT external: 5A or 1A

Continuous overload: 1,2In

Instantaneous overload: 10In/5s

Rating frequency fn: 50Hz

Working frequency: 45...65Hz

Option: frequency rating fn 400Hz

Accuracy (EN/IEC 60051): class 1,5

Option: accuracy cl.1

Rated burden: ≤ 1,1VA

INSULATION

(EN/IEC 61010-1)

Installation category: III

Pollution degree: 2

Insulation voltage rating: 600V (Phase - Neutral)

A.C. voltage test 4kV r.m.s. 50Hz/5s

Considered circuits: all circuits and earth

ENVIRONMENTAL CONDITIONS

Reference temperature: 23°C

Nominal range of use: 5...45°C

Limit range of use: -25...60°C

Relative humidity: < 75% (@ 23°C) yearly average value,
< 95% (@ 23°C) highest value for max. 30 days a year, without condensing

Limit range for storage and transport: -40...80°C

Vibration test: according to EN/IEC 60051-1 paragraph 7.6

Shock test: according to EN/IEC 60051-1 paragraph 7.6

HOUSING

Mounting: flush mounting

Modello Model	A	Conessioni / Connections	Coppia serraggio consigliata (Nm) Tightening torque advised (Nm)	
			Min.	Max.
RQ48E	1...15A	faston 6,3 x 0,8mm / faston 6,3 x 0,8mm		
	20...60A	morsetti a vite M5 / screw terminal M5	2	2,5
RQ72E-RQ96E	1...15A	morsetti a vite M4 - faston 6,3 x 0,8mm / screw terminal M4 - faston 6,3 x 0,8mm	1	1,5
	20...60A		2	2,5
	80...100A	morsetti a vite M7 / screw terminal M7	2,5	3

Materiale custodia: policarbonato autoestinguente

Grado di protezione(EN/IEC 60529): IP52 frontale, IP20 morsetti (con coprimorsetto)

Opzione: protezione frontale IP54

Foratura pannello: vedi tabella dimensioni

Frontale: vedi tabella dimensioni

Profondità: vedi tabella dimensioni

Peso: vedi tabella dimensioni

Housing material: self-extinguishing polycarbonate

Protection degree (EN/IEC 60529): IP52 front frame, IP20 terminals (with protection)

Option: protection IP54 front frame

Panel cutout: see table dimensions

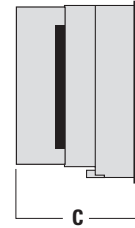
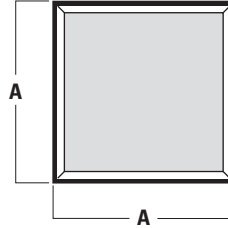
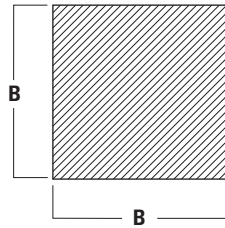
Front frame: see table dimensions

Depth: see table dimensions

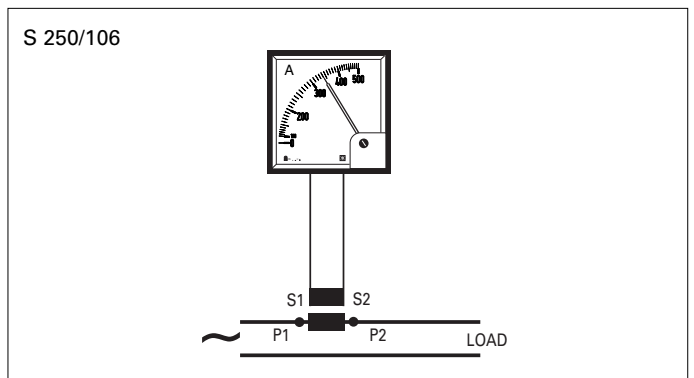
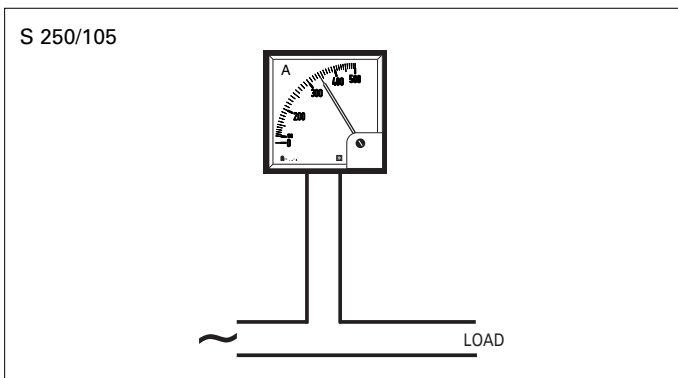
Weight: see table dimensions

DIMENSIONI DIMENSIONS

Modello / Model	A	B	C	Peso / Weight
RQ48E	48x48	45x45	75	120gr.
RQ72E	72x72	68x68	69	190gr.
RQ96E	96x96	92x92	69	260gr.



SCHEMI D'INSERIZIONE WIRING DIAGRAMS



La I.M.E. S.p.A. si riserva in qualsiasi momento, di modificare le caratteristiche tecniche senza darne preavviso. / I.M.E. S.p.A. reserves the right, to modify the technical characteristics without notice.